

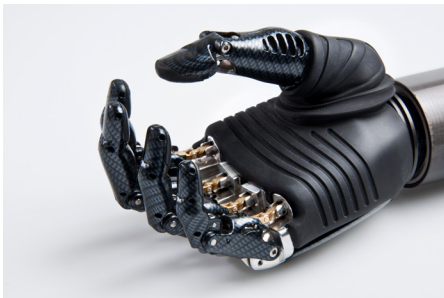
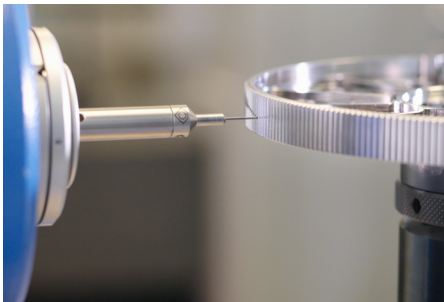


Engineering Apprenticeship Scheme



Introduction to Reliance

Reliance is a world-leading family-owned company, manufacturing engineering solutions for customers in a diverse range of industries. For sixty years, we have offered an apprenticeship scheme to support young engineers starting their careers.



Overview

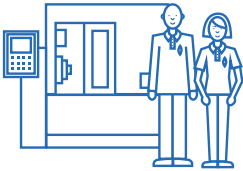
The Reliance apprenticeship is a four-year paid position which offers rising pay as your skills increase. Throughout the course apprentices take a hands-on approach to learning vital engineering and manufacturing skills across a range of disciplines. You will learn how to operate manual machinery and also how to program machines using CNC (Computer Numerical Control).

You will gain recognised formal qualifications through working in our accredited training facility and attending Kirklees College one day a week. As a Reliance apprentice you are considered a full-time employee from the start of your apprenticeship and you are eligible to join our healthcare and pension schemes.

After successfully completing the four-year programme, and achieving the necessary qualifications, you are guaranteed continuing employment at Reliance. The option to study for a degree is also available for those who secure sponsorship.

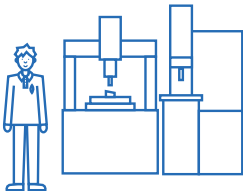
Department Overview

You will have the chance to experience working within different departments during your apprenticeship.



Training Area

The Training Area is where all of our apprentices begin their careers. Here, you will cover the main principles of manual turning and milling along with other aspects of engineering including CNC machining, CAD, technical drawing and how to work safely in an engineering environment. The Training Area is situated next to the Tool Room where the tooling is created for various projects.



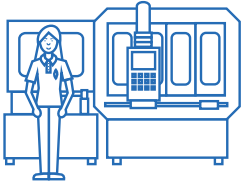
Inspection Department

The Inspection Department is a vital part of the company. Thorough inspection of components is critical to ensure that all products meet the correct specification. You will be trained to inspect your own work and to understand the relevant equipment used to measure each feature of a component.



Assembly Department

Reliance has multiple assembly departments including a laminar flow clean room where high vacuum compliant units are assembled for a variety of different applications.



Manufacturing Department

We are continually investing in new machines and technology to ensure that our manufacturing facilities remain competitive and up-to-date. This includes investment in state-of-the-art CNC lathes and milling machines.

With the complex nature of the components being produced it is essential that advanced processes are used. These require skilled engineers to create programs and methods for manufacture. This is a career route that should interest any applicant.



Engineering Department

The Engineering Department produce the designs and drawings needed for manufacture. Many of our past apprentices now work in this department having studied at university after completing their apprenticeship.



Sales Department

Our Sales Department work to bring in new orders across the many different areas in which Reliance specialises. We have recently introduced the opportunity for our second-year apprentices to work in one of business units within Sales for a week to give them a well-rounded experience of the company.

Entry Requirements

We are looking for strong academic achievers who enjoy practical engineering work, are computer literate, and want to further their education whilst gaining practical skills.

You should have, or expect to gain, at least five GCSE passes at grade C or above (or equivalent e.g. above level 5) including maths and science.

You will need a positive approach to training and a genuine enthusiasm towards developing a career in engineering, as well as being determined to work hard in order to improve your skills throughout your apprenticeship.





Are you an Engineer of the Future?

If you wish to apply, please download an application form from our website. Applications can be submitted by post or email.



apprenticeships@reliance.co.uk



01484 601000



www.reliance.co.uk



[@RP_Apprentices](https://twitter.com/RP_Apprentices)



Apprenticeships, Reliance Precision Ltd, Rowley Mills,
Penistone Road, Lepton, Huddersfield, HD8 0LE